

Advanced
Engineering

Hitachi Tool

HITACHI
Inspire the Next

Indexable
Milling
+Modular Series

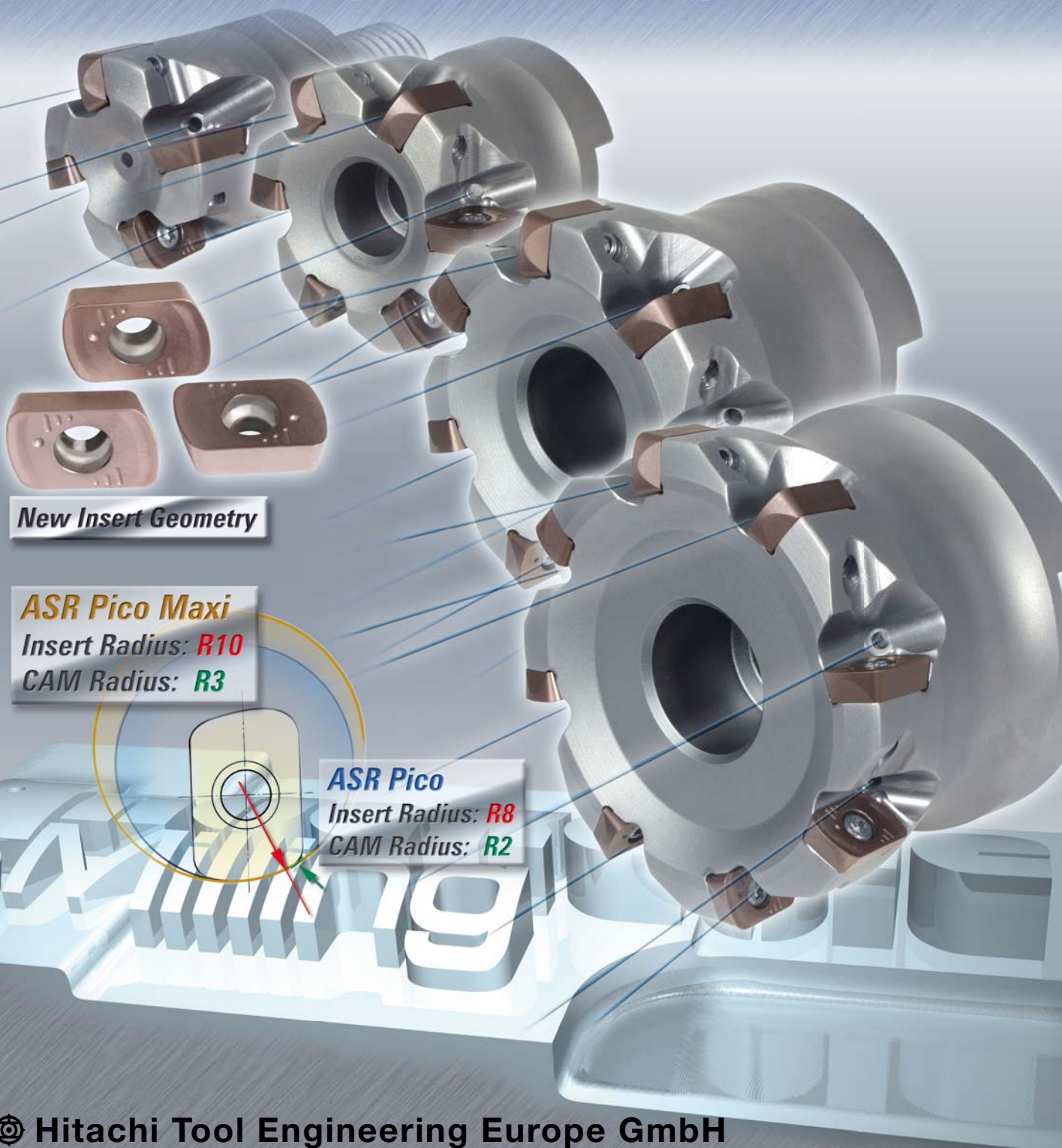
No. 329.2

New Sizes

ASR Pico Maxi Turbo Metric Series

Ø 20 ~ Ø 100 · High Feed Cutting (HFC)

High Hardness Cutting (HHC)



New Insert Geometry

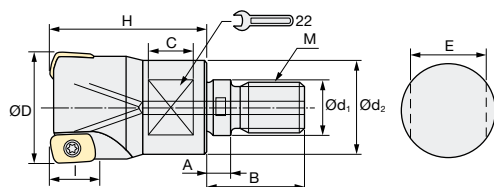
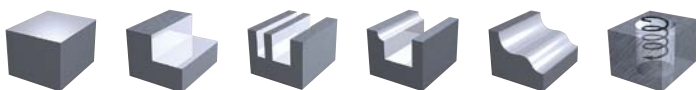
ASR Pico Maxi
Insert Radius: **R10**
CAM Radius: **R3**

ASR Pico
Insert Radius: **R8**
CAM Radius: **R2**

Indexable Milling Tools

ASRM | Pico Maxi – Turbo Metric Series – Modular Type

Q max High Efficient	Jet Air Hole	▽ Roughing	▽▽ Semi-Finishing	HRC 62	No. of Teeth 2~6
--------------------------------	------------------------	----------------------	-----------------------------	------------------	----------------------------



Torque on screw:
2.0 Nm

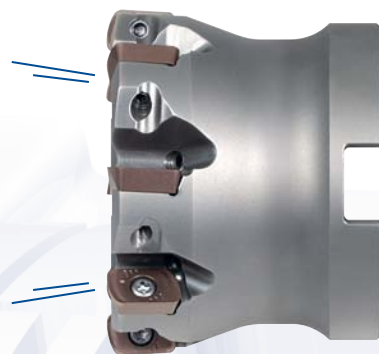
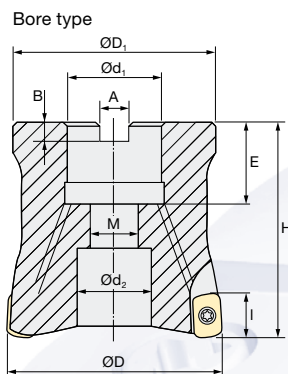
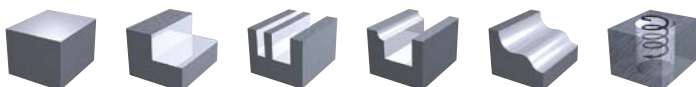
CAM Radius: **3 mm**
ØD -0.1/-0.2

Modular Type													Inserts	
ID Code	Item Code	Flutes	ØD	H	Ød ₁	M	Ød ₂	A	B	C	E	I		
FH180	ASRM-3020R-2-M10	2	20	30	10.5	M10	18	5.5	19	10	15	13	EPNW08T3TN-10 EPMT08T3TN-10	
FH181	ASRM-3025R-3-M12	3	25	35	12.5	M12	21	5.5	22	10	17	13		
FH173	ASRM-3032R-4-M16	4	32	40	17	M16	29	6	23	12	22	13		
FH174	ASRM-3035R-4-M16	4	35											
FH175	ASRM-3042R-6-M16	6	42											

Wrench Size

ASRB | Pico Maxi – Turbo Metric Series – Bore Type

Q max High Efficient	Jet Air Hole	▽ Roughing	▽▽ Semi-Finishing	HRC 62	No. of Teeth 6~10
--------------------------------	------------------------	----------------------	-----------------------------	------------------	-----------------------------



Torque on screw:
2.0 Nm

CAM Radius: **3 mm**
ØD -0.1/-0.2

Bore Type													Inserts	
ID Code	Item Code	Flutes	ØD	H	Ød ₁	Ød ₂	M	ØD ₁	A	B	E	I		
FH167	ASRB-3042RM-6-16	6	42	40	16	13.5	8	35	8.4	5.6	19	13	EPNW08T3TN-10 EPMT08T3TN-10	
FH168	ASRB-3052RM-7-22	7	52	50	22	17	10	40	10.4	6.3	20			
FH169	ASRB-3052RM-7-27													
FH170	ASRB-3066RM-8-27	8	66	70	27	20	12	45	12.4	7	22			
FH171	ASRB-3080RM-9-27	9	80											
FH172	ASRB-3100RM-10-32	10	100	70	32	26	16	70	14.4	8	25.5			

For more Details about ASR Pico and EPNW06...-8 Inserts please see our brochure No. 320.3 ASR Pico
Mehr Details über ASR Pico und EPNW06...-8 Schneidplatten finden Sie in unserem ASR Pico Prospekt No. 320.3



Indexable Milling Tools

INSERTS ASRM/ASRB | Pico Maxi – Turbo Metric Series – Modular/Bore Type

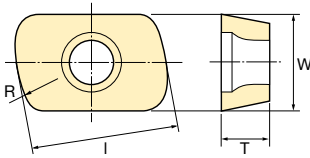


Fig.1: EPNW Standard Shape

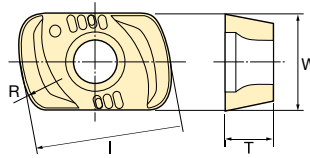


Fig.2: EPMT with Breaker

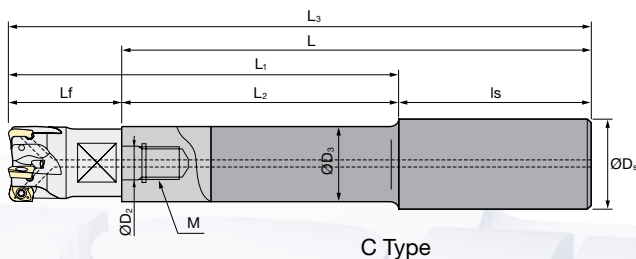


PVD Main grade
PVD Thick layer for soft materials + Wet Cutting and Stainless Steels
PVD Tough grade for pre-hardened steels

ID Code	Item Code	Tolerance Class	JX Coated	JS Coated	JP Coated	Size (mm)				Shape				
			JX1045	JS4060	JP4020	R	L	T	W					
WF203	EPNW08T3TN-10 JP4020	N			•	10	12.648	3.97	8.25	Fig.1				
WF205	EPNW08T3TN-10 JX1045		•											
WF204	EPNW08T3TN-10 JS4060			•										
WF200	EPMT08T3TN-10 JP4020	M			•					10	12.648	3.97	8.25	Fig.2
WF202	EPMT08T3TN-10 JX1045		•											
WF201	EPMT08T3TN-10 JS4060			•										

Type	Cutter body	Parts Shape		Clamp Screw		Wrench	
		ID-Code	Item-Code	ID-Code	Item-Code		
Modular	ASRM-30 ...	ET152	265-141	ET011	104-T10		
Bore Type	ASRB-3 ...						

ASC | Carbide Shanks for Modular Mills



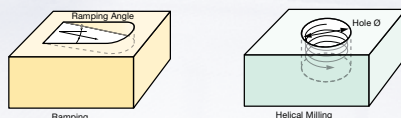
- SUPER Lock milling chucks or shrink-fit holders can be used.
- Please note that the dimensions for L₃, L_f, and L₁ may be different when attached to other modular-type holders such as ASRM, AHUM, ARPFM, BCFM, ABPFM, etc.
- SUPER Lock Aufnahmen oder Schrumpffutter können verwendet werden.
- Bitte beachten Sie, dass die Maße für L₃, L_f, und L₁ abweichen können, wenn andere modulare Aufnahmen verwendet werden, wie z.B. ASRM, AHUM, ARPFM, BCFM, ABPFM, usw.

Carbide Shank		ØD ₂	M	L ₃	L	L _f	L ₂	L ₁	L _s	ØD ₃	ØD ₅	ØD ₄	Type	Cutter body
With Airhole	FH143	ASC20-10.5-120-50	10.5	M10	150	120	30	50	80	70	18	20	C	Ø20
	FH144	ASC20-10.5-220-50			250	220				170				
	FH145	ASC25-12.5-145-65	12.5	M12	175	145		65	95	80	23	25		
	FH146	ASC25-12.5-265-65			295	265				200				
	FH147	ASC32-17-160-80	17	M16	190	160		80	110	80	28	32		
	FH148	ASC32-17-310-80			340	310				230				

For further information about Modular Chucks please see our AMC brochure No. 705.2
Weitere Informationen über Modulare Werkzeugaufnahmen finden Sie in unserem AMC Prospekt No. 705.2



Ramping / Helical Milling



Tool diameter Ø mm	Ø 32	Ø 35	Ø 42	Ø 52	Ø 66	Ø 80	Ø 100
Max. ramp angle °	4.5°	3.5	2.5°	1.5°	1°	0.5°	0.5°
Helical Milling / Hole Dia. (mm)	50 ~ 62	56 ~ 68	70 ~ 82	90 ~ 102	118 ~ 130	146 ~ 158	186 ~ 198

Recommended Cutting Conditions: p. 4 – 5

Product Range

Solid Carbide End Mills

micro**EndMill**

CBN
Cubic Boron Nitride

HD
COATING

Epoch21

MINIATURE

3D-Cut

Indexable Milling Tools

**Indexable
Milling**

ESM Speed End Mills

EMC Power Drills

ESM
SPEED

Milling Chucks

ASR Pico Maxi
Insert Radius: R10
CAM Radius: R3

**Milling
Chucks**

Distributed by:

ASR Pico
Insert Radius: R8
CAM Radius: R2

Hitachi Tool Engineering Europe GmbH

Itterpark 12 · 40724 Hilden · Germany · Phone +49 (0) 21 03-24 82-0 · Fax +49 (0) 21 03-24 82-30

e-Mail info@hitachitool-eu.com · Internet www.hitachitool-eu.com

© 2011 by Hitachi Tool Engineering Europe GmbH · 2nd Edition · Printed in Germany